

# Oil Concentrator<sup>®</sup>



## More Complete Oil/Water Separation

- Slashes disposal costs by providing water-free oil for disposal
- Oil/water separation is virtually complete
- Helps increase the recycle value of skimmed oil
- Saves costly coolant and washing solutions from premature disposal
- Available for all Abanaki oil skimmers

## General Description

The Abanaki Oil Concentrator provides virtually complete oil/water separation for recycling or disposal of either liquid.

Under most operating conditions, Abanaki skimmers pick up oil with only small traces of water. However, as surface oil is reduced to a thin layer (1/16 inch thick or less), more water (or coolant) may be picked up along with the oil. When used in tandem with an oil skimmer, the Oil Concentrator solves this problem by providing final phase separation. The result is water (or coolant) available for recycling, and virtually water-free oil for disposal.

The Oil Concentrator is non-electrical and contains no moving parts — it simply receives liquid directly from the skimmer. Based on the principle of gravity separation, the Concentrator tank is sized so that there is adequate dwell time for the oil and water to separate. Water discharge is through a tube that has an open end near the bottom of the Concentrator, while oil flow is through a separate drain port near the top. As additional liquid enters the Concentrator, water and oil are forced out through their respective discharge tubes and ports. A sludge screen provides additional dwell time for separation while preventing debris from contaminating either the water or the oil.

Installed at the discharge end of the oil skimmer, the Concentrator comes complete with mounting bracket, removable sludge screen and drain plug for easy cleaning. An optional thermostatically controlled heater is available for use with thick oils, or when the application is in freezing temperatures. (A heater should not be used in environments where explosive fumes might be present.)

Abanaki recommends the use of the Concentrator with all oil skimmers. It increases the efficiency of the skimmer and reduces costs associated with oil disposal.



Typical Oil Concentrator Installation

## Oil Concentrator Advantages

- Easy mounting
- Small space requirements
- No skimmer modifications needed
- Needs no electricity, timers, sensors or pumps
- Minimal maintenance
- No moving parts



**ABANAKI<sup>®</sup>** OIL SKIMMERS

USA: 17387 Munn Road • Chagrin Falls, Ohio 44023  
800-358-SKIM (7546) • (440) 543-7400 • FAX: (440) 543-7404

UK: Avon Business Centre • Woodland Way • Bristol BS15 1AW  
0117 9616679 • FAX: 0117 9616687

[www.abanaki.com](http://www.abanaki.com)

# Oil Concentrator<sup>®</sup>

## Key Features of Abanaki Oil Concentrators

- Mounts easily on all Abanaki skimmers
- Brackets and hardware supplied by Abanaki
- Sludge screen keeps large debris out of skimmed oil
- Drain plug facilitates routine maintenance
- Optional heater keeps oil flowing in cold environments

## Specifications

See installation drawings for additional detail.

Applications and Volumes:

- OC-200 for all Multi-Belt units: 17 gallons (64.4 liters).
- OC-100 for Model 8 and Model 4: 2.5 gallons (9.5 liters).
- ODM-100 for Tote-it and Mighty Mini: 0.56 gallons (2.1 liters).
- ODM-50 for TubeTastic, Mighty Mini, Economini, and Li'l Blue: 12 ounce capacity

Materials :

- OC-100 and 200: steel weldments with a corrosion-resistant coating.
- ODM-100: fiberglass construction.
- ODM-50: calcium carbonate filled polypropylene

Mounting Method

All brackets and hardware supplied by Abanaki — no skimmer modifications required.

Mounting Area and Weights<sup>1</sup>

- See installation drawings and tables.

Operating Limits<sup>2</sup>:

- Temperature of liquid: 33°–212°F (0.5°–100°C).
- Carbon Steel units: pH of liquid: 5–10.
- Fiberglass or Stainless units: pH of liquid: 0–13.
- Poly carbonate filled polypropylene: pH of liquid 5–10.

## Options (Specify)

Models OC-100 and OC-200:

- Stainless steel construction.
- Thermostatically controlled (500W/110v) heater.
- Discharge hose kits for oil and water outlets (see installation drawing and table).

Models ODM-50 and ODM-100:

- Discharge hose kits for oil and water outlets (see installation drawing and table).

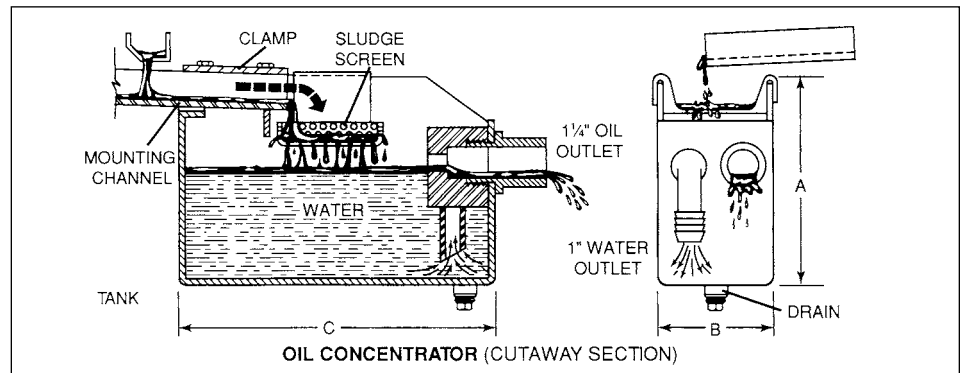
## Specification Notes

1. Oil Concentrators are UPS shippable.
2. Contact factory for recommendations covering operating conditions not listed above.

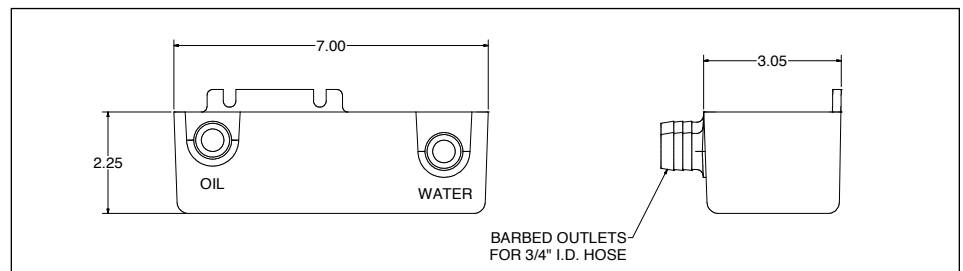
## Dimension, Weights, and Options

Model	A	B	C	Weight	Optional Hose Kit	Optional Heater	Used With
<b>OC-100</b>	10.00" (254mm)	5.75" (146mm)	15.6" (396mm)	10 lbs.	Yes	Yes	Models 4 and 8
<b>OC-200</b>	18" (457mm)	12" (305mm)	24" (610mm)	70 lbs.	Yes	Yes	Multi-Belt Models
<b>ODM-50</b>	2.25" (57mm)	3.05" (77mm)	7.00" (179mm)	0.4 lbs.	Yes	No	TubeTastic, Mighty Mini, Economini, Li'l Blue
<b>ODM-100</b>	4.50" (114mm)	6.25" (159mm)	9.75" (248mm)	4 lbs.	Yes	No	Mighty Mini and Tote-It

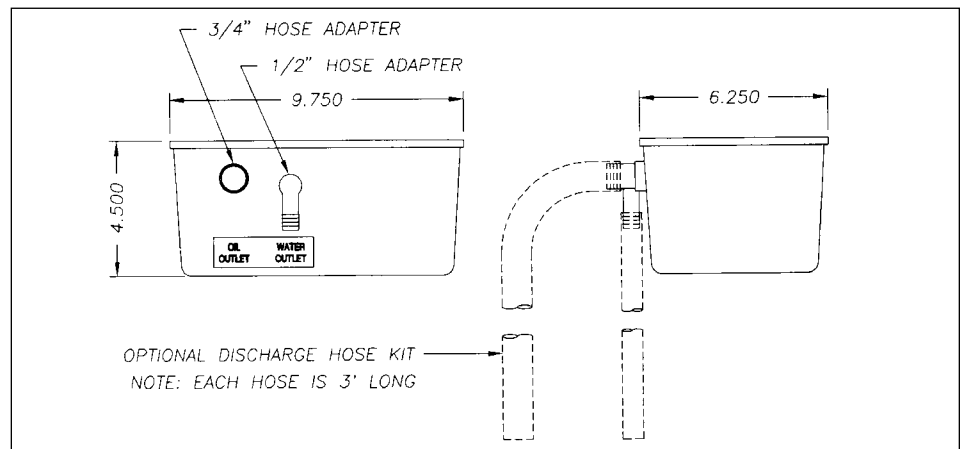
## Models OC-100/200



## Model ODM-50



## Model ODM-100



# ABANAKI<sup>®</sup> OIL SKIMMERS

USA: 17387 Munn Road • Chagrin Falls, Ohio 44023  
800-358-SKIM (7546) • (440) 543-7400 • FAX: (440) 543-7404

UK: Avon Business Centre • Woodland Way • Bristol BS15 1AW  
0117 9616679 • FAX: 0117 9616687

[www.abanaki.com](http://www.abanaki.com)